

## Graduate Medical Education *Family Medicine Faculty*



**Kenneth Grimm, MD, MS, FAFPP**

***Program Director***

**Medical Degree:** University of Pennsylvania, Philadelphia, PA  
**Residency:** University of Michigan, Ann Arbor, MI  
**Fellowship:** Primary Care Faculty Development, Michigan State University, East Lansing, MI  
**Board Certified:** Family Medicine  
**Member:** American Academy of Family Physicians, Society for Teachers of Family Medicine, and the Michigan Academy of Family Physicians



**Sunil Menawat, MD**

***Associate Program Director***

**Medical Degree:** West Virginia University, Morgantown, WV  
**Residency:** University of Florida, Jacksonville, FL; Oakwood Hospital, Wayne, MI  
**Fellowship:** Mayo Medical School, Rochester, MN  
**Board Certified:** Family Medicine  
**Member:** American Medical Association, Michigan State Medical Society, American Academy of Family Physicians



**Erin Diviney Chun, MD**

**Medical Degree:** Wayne State University, Detroit, MI  
**Residency:** Oakwood Hospital, Wayne, MI  
**Fellowship:** Geriatrics, University of Michigan, Ann Arbor, Michigan  
**Board Certified:** Family Medicine, Geriatrics

For more information, visit [www.stmarymercy.org/GME](http://www.stmarymercy.org/GME)  
or call 734-655-2727

## Graduate Medical Education *Internal Medicine Faculty*



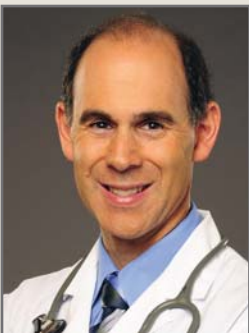
**Jeffrey Yanez, MD**  
*Program Director*

**Medical Degree:** St. Georges University School of Medicine, Grenada, West Indies  
**Residency:** St. Joseph Mercy Oakland, Pontiac, MI  
**Board Certified:** Internal Medicine, Pediatrics  
**Member:** Fellow, American College of Physicians;  
Fellow, American Academy of Pediatrics



**David Steinberger, MD**  
*Associate Program Director*

**Medical Degree:** University of Michigan Medical School, Ann Arbor, MI  
**Residency:** Sinai-Grace Hospital, Detroit, MI  
**Board Certified:** Internal Medicine, Geriatrics  
**Member:** American College of Physicians, American Geriatric Society



**Randall Sternberg, MD**

**Medical Degree:** Wayne State University, Detroit, MI  
**Residency:** Lutheran General Hospital, Park Ridge, IL  
**Fellowship:** Rheumatology, Henry Ford Hospital, Detroit, Michigan  
**Board Certified:** Internal Medicine

For more information, visit [www.stmarymercy.org/GME](http://www.stmarymercy.org/GME)  
or call 734-655-2727

## Graduate Medical Education *Internal Medicine Faculty*



**Fakhruddin Attar, MD**

Medical Degree: Medical College, Maharaja Sayajiraj University, Baroda, India  
Residency: Albert Einstein College of Medicine, Bronx, NY  
Board Certified: Internal Medicine  
Member: American College of Physicians



**Banathally Nandish, MD**

Medical Degree: J.J.M. Medical College, Kuvempu University, Davangere, India  
Residency: Sinai-Grace Hospital, Detroit, MI  
Board Certified: Internal Medicine



**Michael Rosen, MD**

Medical Degree: Wayne State University, Detroit, MI  
Residency: Sinai-Grace Hospital, Detroit, MI  
Board Certified: Internal Medicine  
Member: American Society of Hypertension,  
American College of Physicians

For more information, visit [www.stmarymercy.org/GME](http://www.stmarymercy.org/GME)  
or call 734-655-2727

## Graduate Medical Education *Internal Medicine Faculty*



**Fatema Omran, MD**

**Medical Degree:** Tishreen University, Lattakia, Syria  
**Residency:** Unity Health System Park Ridge Hospital, Rochester, NY  
**Fellowship:** Aesthetics, University of South Florida College of Medicine, Tampa, FL  
Endocrinology, University of Damascus, Syria  
**Board Certified:** Internal Medicine  
**Member:** American Association of Lipidimiology,  
American Association of Clinical Endocrinology,  
National Arab American Medical Association,  
American Academy of Anti-Aging Medicine



**Harsha Ramchandani, MD, MBBS**

**Medical Degree:** Gandhi Medical College, Bhopal, India  
**Residency:** Gandhi Medical College, Hamidia Hospital, India  
DMC Sinai Grace Hospital, Detroit, MI  
**Member:** American College of Physicians, Michigan State Medical Society,  
Michigan Association of Physicians of Indian Origin



**Subburaman Sivakumar, MD**

**Medical Degree:** Tirunelveli Medical College, Madurai University, Tirunelveli, India  
**Residency:** Henry Ford Hospital, Detroit, MI  
**Board Certified:** Internal Medicine  
**Member:** American College of Physicians, American Medical Association,  
American Diabetic Association

For more information, visit [www.stmarymercy.org/GME](http://www.stmarymercy.org/GME)  
or call 734-655-2727

## Graduate Medical Education *Emergency Medicine Faculty*



**Bruce St. Amour, DO**  
*Program Director*

**Medical Degree:** Michigan State University, East Lansing, MI  
**Residency:** Chicago College of Osteopathic Medicine (CCOM)  
at Midwestern University, Chicago, IL  
**Board Certified:** Emergency Medicine  
**Member:** American Osteopathic Association, American College of Emergency  
Physicians, American College of Osteopathic Emergency Physicians



**Michael Calice, MD**

**Medical Degree:** Wayne State University School of Medicine, Detroit, MI  
**Residency:** William Beaumont Hospital, Royal Oak, MI  
**Board Certified:** Emergency Medicine  
**Member:** American College of Emergency Physicians,  
Michigan College of Emergency Physicians



**Steve Chabala, DO, FACEP**

**Medical Degree:** Michigan State University, East Lansing, MI  
**Residency:** Riverside Osteopathic Hospital, Trenton, MI (Family Practice)  
Henry Ford Hospital, Detroit, MI (Emergency Medicine)  
**Board Certified:** Family Practice, Emergency Medicine  
**Member:** American Academy of Emergency Medicine



**Jeff Chapman, DO, MPH**

**Medical Degree:** Michigan State University, East Lansing, MI  
**Residency:** University of Michigan, Ann Arbor, MI  
**Board Certified:** Emergency Medicine

For more information, visit [www.stmarymercy.org/GME](http://www.stmarymercy.org/GME)  
or call 734-655-2727